

APH City Park 1a + 1b

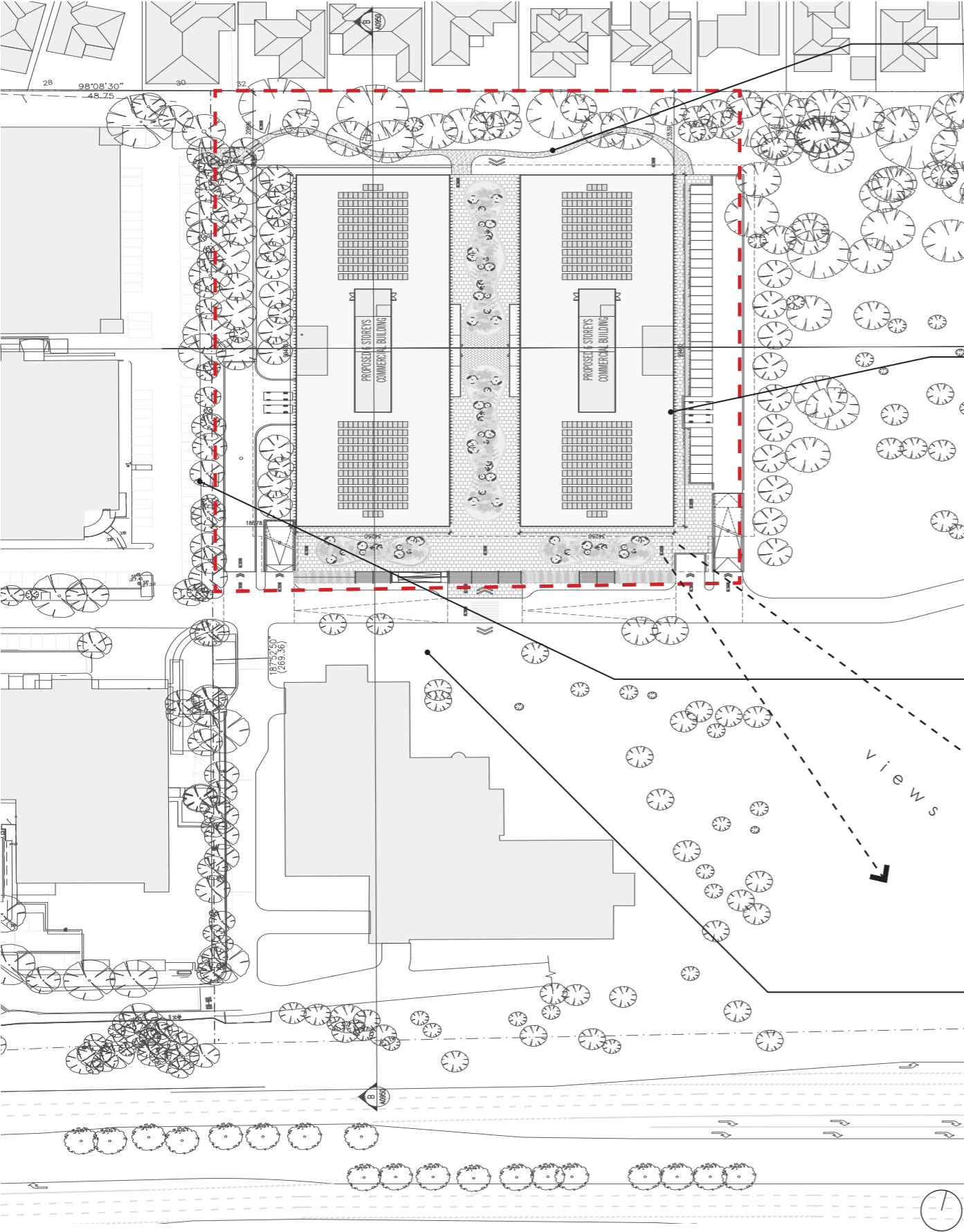
353-383 Burwood Highway, Forest Hill

Landscape Concept

Prepared for APH & Elenberg Fraser

320.0200.01.D001

Site Analysis



LOCATION PLAN 1:1250

Northern Interface

- 22m green buffer
- Existing Vegetation to remain as much as possible
- Plant new native trees & plants with opportunity for habitat
- Opportunity for some access for passive activities



Eastern Interface

- Removal of existing road and construction of new road will create significant earthworks here - propose this is included in works
- Soften interface to carpark with mounded landscape with native plantings and trees
- Landscaping this interface will also absorb the building from the low side and make less prominent



Western Interface

- Screen adjacent carpark with more tree planting
- Opportunity for breakout courtyard at lower level
- Landscape entry driveway



Southern Interface & HP

- Appears to be a connection between proposed building and HP frontage.
- Assume removal of carpark here will require reconfiguration of landscape - opportunity to bring the landscape across into this area
- New path required to connect to footpath as existing will be removed with proposed works

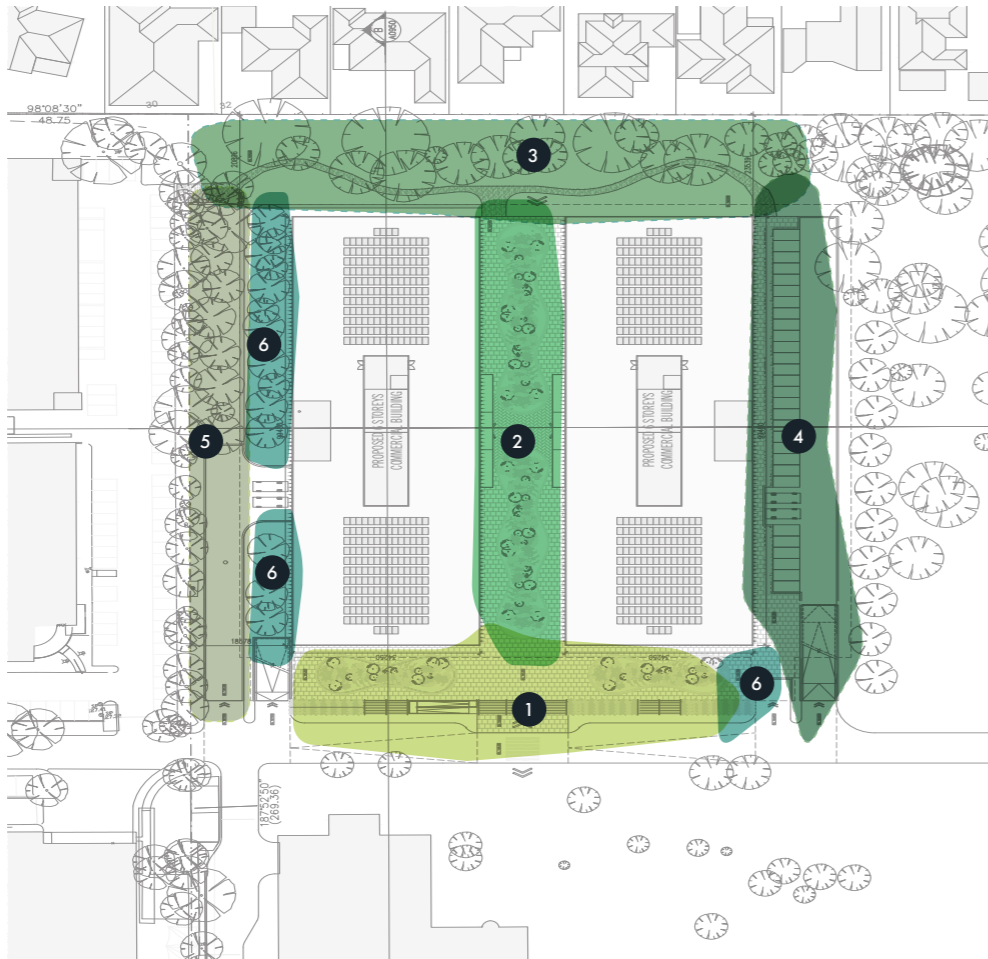


Landscape Vision

clean lines | simple materials |
soft native planting



Landscape Zones



- 1

Entry Forecourt
 - Entry landscape & arrival
 - Level difference - steps, ramps & landscaping
- 2

Central Plaza
 - Screen adjacent carpark with more tree planting
 - Opportunity for breakout courtyard at lower level
 - Landscape entry driveway
- 3

Northern Interface
 - Existing Vegetation to remain as much as possible
 - Plant new native trees & plants with opportunity for habitat
 - Quiet seating area
- 4

Eastern Interface
 - Landscaped carpark area
 - Opportunity to mound up landform to absorb building
- 5

Western Interface
 - Screen adjacent carpark with more tree planting
 - Landscape entry driveway
- 6

Office Courtyards
 - Opportunity for private break-out space with paving and screen planting for green outlook



Landscape Plan

- 1

ENTRY FORECOURT

 - Clear open space with views through the central plaza and beyond to the northern landscape
 - Terraced walls down to street level
 - Raised crossing/shared zone
 - Seating nooks & break out spaces with seating benches
 - Raised planters with soft planting and small-medium sized trees
- 2

CENTRAL PLAZA

 - Raised planters with soft planting and small-medium sized trees
 - Seating nooks & break out spaces with seating benches
 - Defined area for cafés, food & beverage
 - Defined entry to lobby
- 3

NORTHERN INTERFACE

 - Quiet contemplative area under the canopy of existing trees
 - Raised planter to building interface with in-ground planting to front
 - Re-vegetation planting with native shrubs and small trees
 - Steppers in gravel
 - Bird bath for native birds
- 4

WESTERN INTERFACE

 - Mainly Low level native planting & medium to large trees
 - Office terrace to ground level (below NGL) with landscaping and small screening trees
 - Larger tree to view axis
- 5

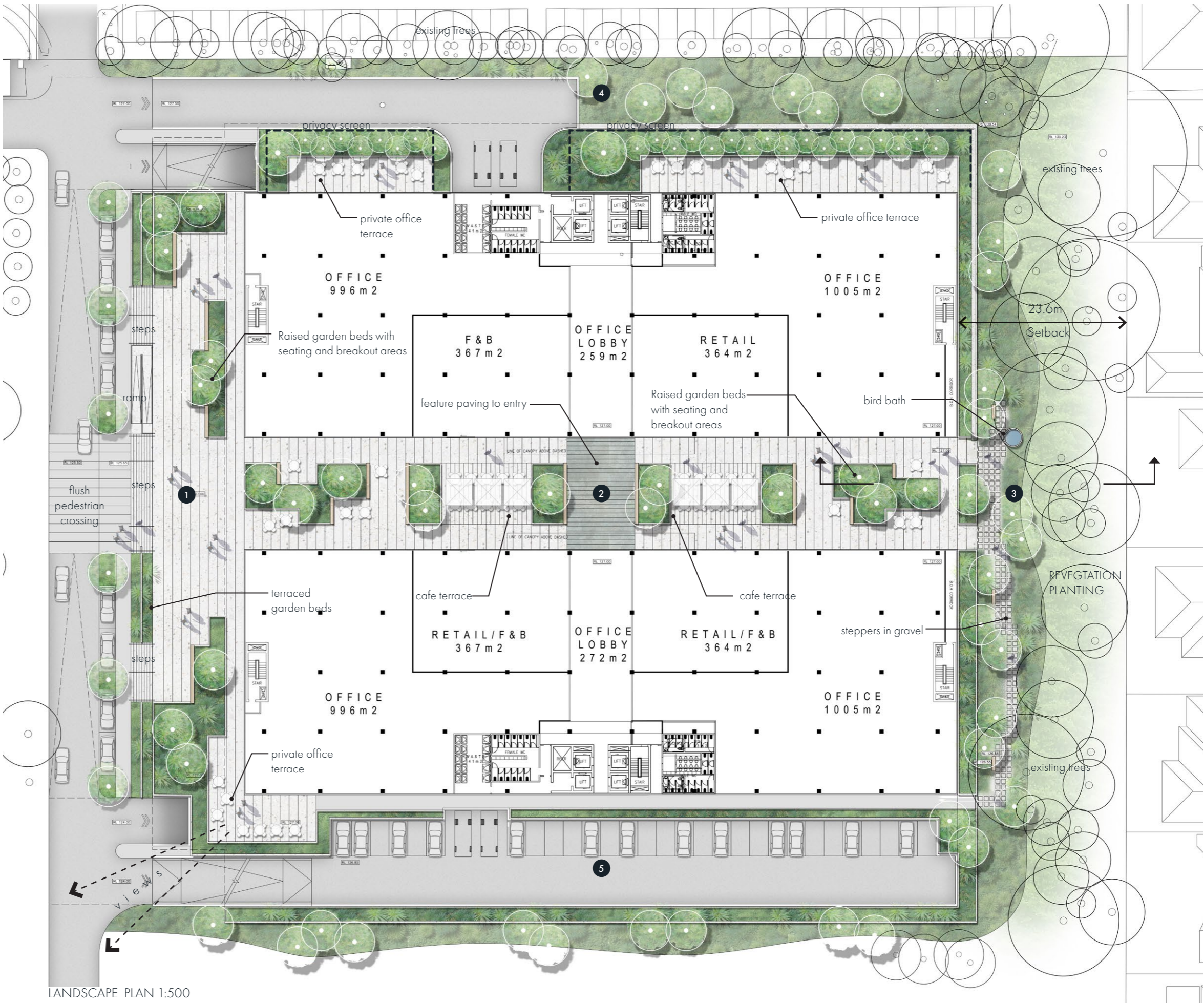
EASTERN INTERFACE

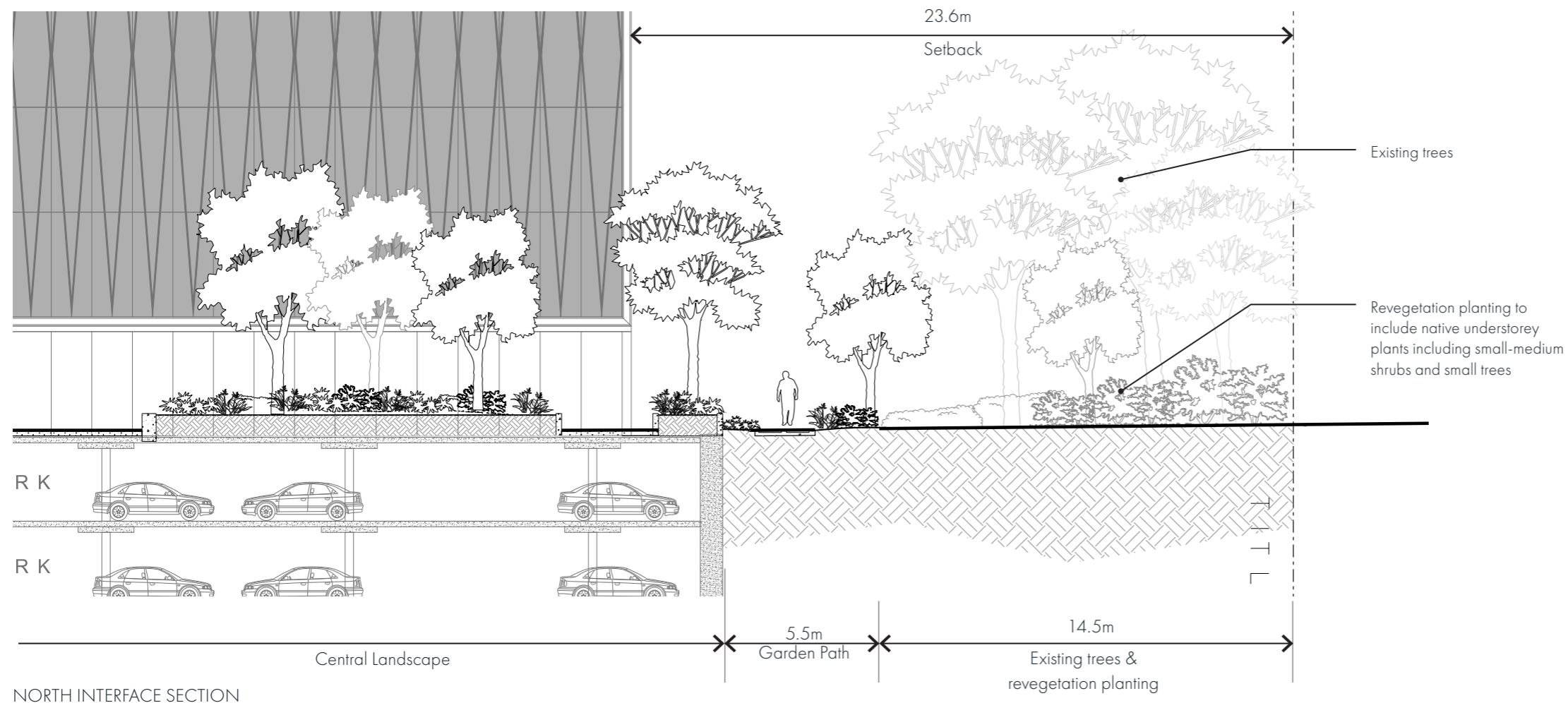
 - Car-park with raised planters to separate footpath
 - Terraced wall down to natural ground level with in-ground mounded planting to front

TREE LEGEND

Existing Trees - Refer Arborist Report

Proposed Trees - Refer Planting Schedule

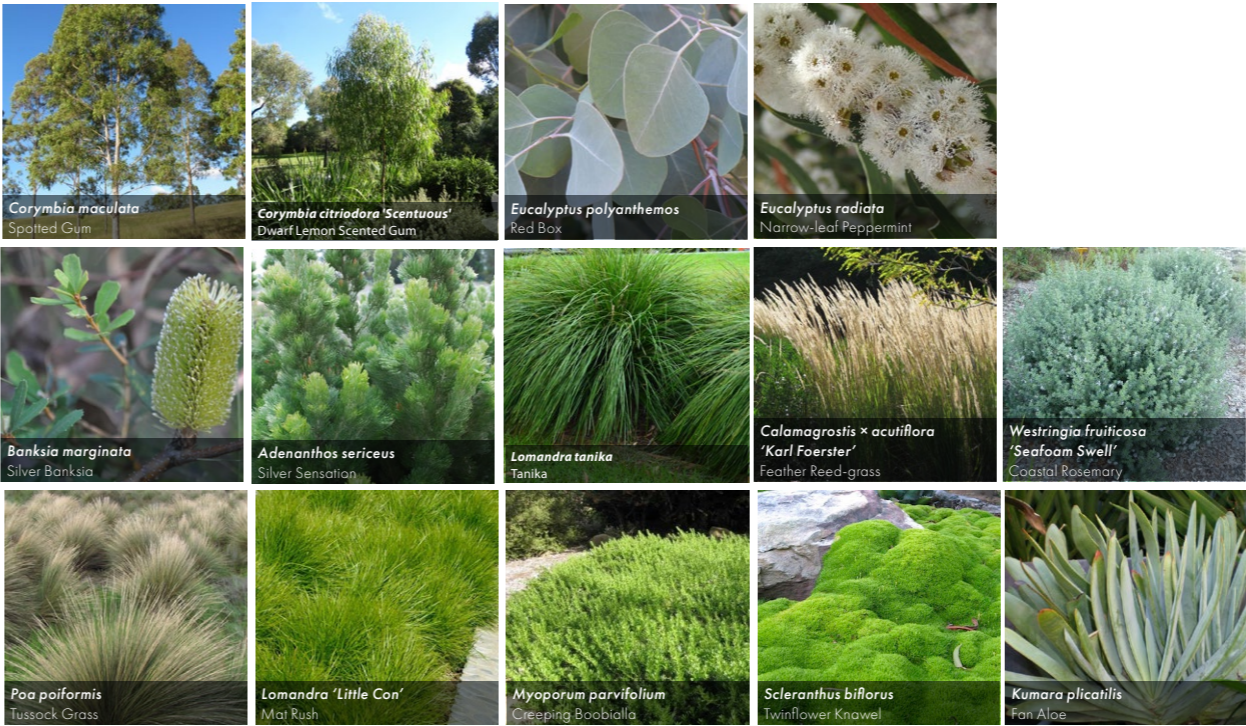




Planting Schedule

| Botanical Name | Common Name | Install Size | Planting Density | Mature size (hwxw) | QTY |
|---|-------------------------|--------------|------------------|--------------------|-----|
| Ground Floor Planting | | | | | |
| TREES | | | | | |
| <i>Corymbia maculata</i> | Spotted Gum | 100L | as shown | 30x 10m | |
| <i>Corymbia citriodora 'Scentuous'</i> | Dwarf Lemon Scented Gum | 100L | as shown | 7 x 3m | |
| <i>Eucalyptus polyanthemos</i> | Red Box | 100L | as shown | 10-15 x 5m | |
| <i>Eucalyptus radiata</i> | Narrow-leaf Peppermint | 100L | as shown | 1.5-20 x 8-12m | |
| <i>Banksia marginata</i> | Silver Banksia | 100L | as shown | 5 x 4m | |
| TOTAL TREES | | | | | 86 |
| SHRUBS & GROUNDCOVERS | | | | | |
| <i>Adenanthos sericeus</i> | Silver Sensation | 300mm | 5/m2 | 1-5 x 1-1.5m | |
| <i>Lomandra tanika</i> | Tanika | 300mm | 5/m2 | 0.6 x 0.7m | |
| <i>Calamagrostis x acutiflora 'Karl Foerster'</i> | Feather Reed-grass | 300mm | 5/m2 | 1.8 x 0.6m | |
| <i>Westringia fruticosa 'Seafoam Swell'</i> | Coastal Rosemary | 300mm | 5/m2 | 2 x 4m | |
| <i>Poa poiformis</i> | Tussock Grass | 300mm | 5/m2 | 1 x 1m | |
| <i>Lomandra 'Little Con'</i> | Mat Rush | 300mm | 5/m2 | 0.3 x 0.3m | |
| <i>Myoporum parvifolium</i> | Creeping Boobialla | 150mm | 5/m2 | 0.5-0.75 x 3m | |
| <i>Scleranthus biflorus</i> | Cushion Bush | 150mm | 5/m2 | 0.2 x 0.8m | |
| <i>Kumara plicatilis</i> | Fan Aloe | 300mm | 5/m2 | 2.4 x 1.8m | |
| TOTAL SHRUBS & GROUNDCOVERS | | | | | TBC |
| North Interface Revegetation Planting | | | | | |
| SMALL TREES | | | | | |
| <i>Allocasuarina littoralis</i> | Black Sheoak | 100L | as shown | 8-12 x 7m | |
| <i>Grevillea Moonlight</i> | Grevillea | 100L | as shown | 5 x 4m | |
| <i>Melaleuca alternifolia</i> | Tea Tree | 100L | as shown | 7 x 3-4m | |
| TOTAL REVEGETATION SMALL TREES | | | | | TBC |
| SHRUBS & GROUNDCOVERS | | | | | |
| <i>Cassinia aculeata</i> | Dogwood | 300mm | 5/m2 | 2-4 x 1-2m | |
| <i>Lomandra longifolia</i> | Spiny-headed Mat-rush | 300mm | 5/m2 | 0.4 x 0.75m | |
| <i>Juncus pallidus</i> | Pale Rush | 300mm | 5/m2 | 0.5-2.3m x 0.3-1m | |
| <i>Hardenbergia violacea</i> | Purple Coral Pea | 150mm | 2/Lm | 3 x 2m | |
| TOTAL REVEGETATION SHRUBS & GROUNDCOVERS | | | | | TBC |

Plant species selected in accordance with 'Tally Ho Urban Design & Landscape Design Guidelines 2015'



Northern Interface Revegetation Planting



Materials



Paving

Precast concrete pavers
eg. Anston Architectural



Feature Paving

Sawn Bluestone



Steppers

Precast concrete pavers in
Bacchus March washed pebbles



Planter Walls

Class 2 Insitu Concrete



Insitu Seating

Spotted gum timber



Lighting

Uplighting to trees

Contact Tract

Melbourne

Level 6, 6 Riverside Quay, Southbank
VIC, Australia 3006
(03) 9429 6133
melbourne@tract.net.au