

CULTIVATION NOTES

Site Preparation: Prior to planting of garden beds remove all weeds either by hand or use Glyphosate in accordance with manufacturer's instructions. Once weeds have died back, dig over areas, wait 7 days and remove any emerging weeds.

Soil Improvement: Incorporate well-rotted organic matter or compost into existing soil at a rate of approx. 30 litres per square metre to a min depth of 250mm. An application of a wetting agent such as Sotamid granules or similar to soils will minimise water runoff and reduce wastage.

Planting out: Water plants thoroughly before planting. Dig a hole 2-4 times wider than the root ball and as deep as pot, roughen surface of hole to encourage the roots to penetrate the soil. Water the hole and allow to drain. Carefully remove the plant by covering the soil with one hand and inverting the pot. Tense out roots if pot bound and trim off any that have been damaged. Position the plant vertically in the hole so that soil level is the same as it was in the pot. Mix 2 double handfuls of compost plus 1 teaspoon slow release granules per shrub into the backfill and firm in by hand making sure that the roots are in contact with the soil. Ensure compost is not dug down too deeply. Water in well using a solution of Plant Starter at a rate of 2-litres/litre.

Watering: Water regularly until plants are well established and show signs of growth. Drought tolerant plants will also need regular watering during their establishment phase.

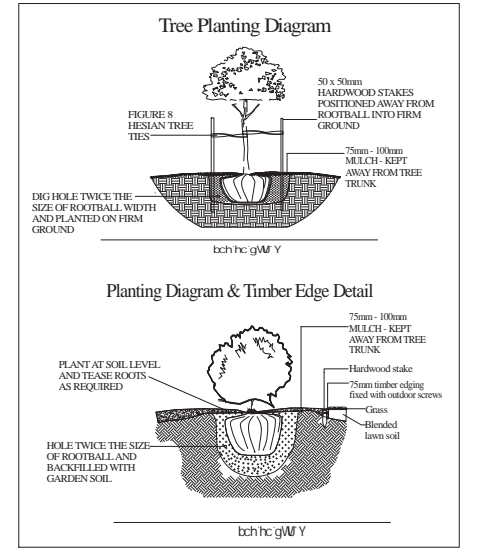
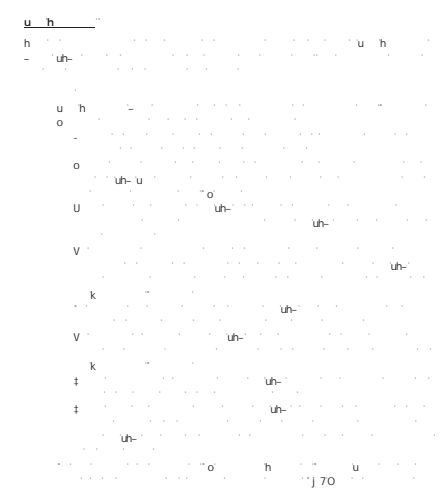
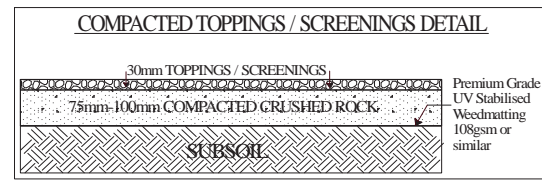
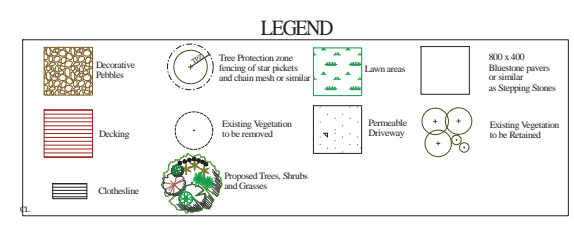
Irrigation: If an irrigation system is to be installed, a drip irrigation to all garden beds connected to an automated timer, pressure regulator and filter. Watering times to be more frequent during establishment phase and less frequent with longer running time once plants are established. Irrigation for lawn areas if required to have pop up irrigation installed as per manufacturer's instructions.

Mulching: Apply 75-100mm layer of organic mulch (composted bark chips) to all garden beds after planting. Keep the stems clear of mulch. Re apply mulch annually.

Fertilising: Feed in spring with slow release granules. Use only low phosphorus fertilizer or 'food for natives' (on Australian plants).

Ongoing Maintenance: Keep garden beds weed free, clip all hedges and prune shrubs after flowering to keep compact. Gardens to be maintained by the owner/resident or a qualified landscape contractor.

Plant Selection: At the of installation all plants should be healthy, well structured with adequately developed root systems not pot bound. Plants and trees should be free from pests, pathogens, disease and any physical damage.



Revision #:
Date: 9/02/2021

Scale:
1:100

Landscape Plan:
74 Main Street Blackburn

Landscape Design by: S.F.
Sun 'n' Shade Pty Ltd