

# Whitehorse City

---

## Waste Collection

Provision of kerbside waste collection service to the community including garbage and recyclables

## Kerbside bin collection requests per 1,000 households

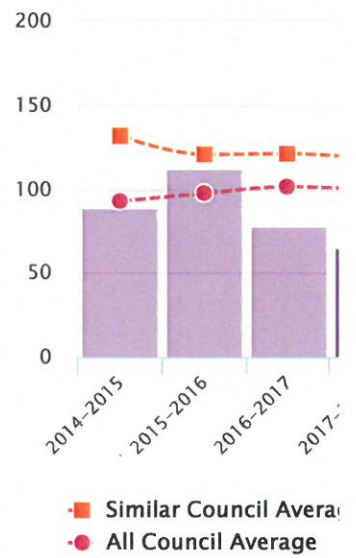
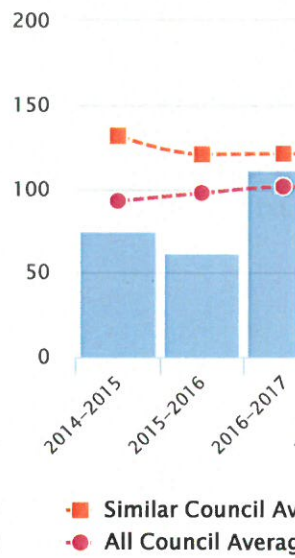
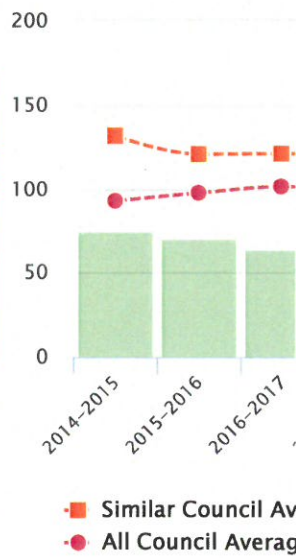
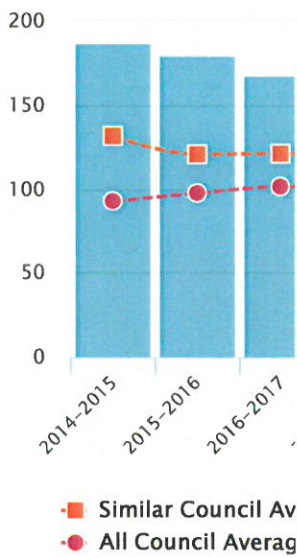
Number of kerbside bin collection requests received by council per 1,000 kerbside bin collection households

**BOROONDARA CITY**  
**197.09**

**KNOX CITY**  
**76.56**

**MANNINGHAM CITY**  
**82.92**

**WHITEHORSE CITY**  
**65.70**

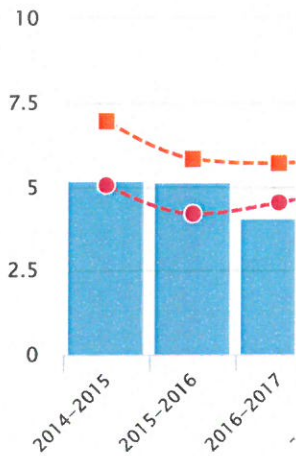


## Kerbside collection bins missed per 10,000 households

Number of kerbside collection bins missed per 10,000 scheduled kerbside collection bin lifts

**BOROONDARA CITY**

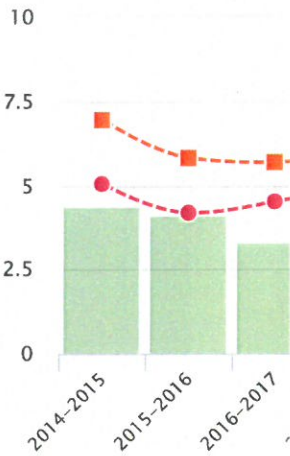
**6.54**



Similar Council Av  
All Council Averag

**KNOX CITY**

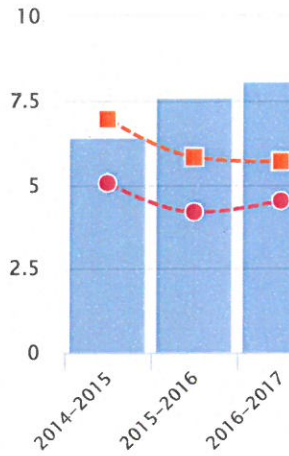
**3.68**



Similar Council Av  
All Council Averag

**MANNINGHAM CITY**

**4.22**



Similar Council Av  
All Council Averag

**WHITEHORSE CITY**

**4.17**



Similar Council Average  
All Council Average

## Cost of kerbside garbage bin collection service per bin

Direct cost to council of the kerbside garbage bin collection service per kerbside garbage collection bin

**BOROONDARA CITY**

**\$121.79**

**KNOX CITY**

**\$106.87**

**MANNINGHAM CITY**

**\$104.47**

**WHITEHORSE CITY**

**\$100.61**



## Cost of kerbside recyclables collection service per bin

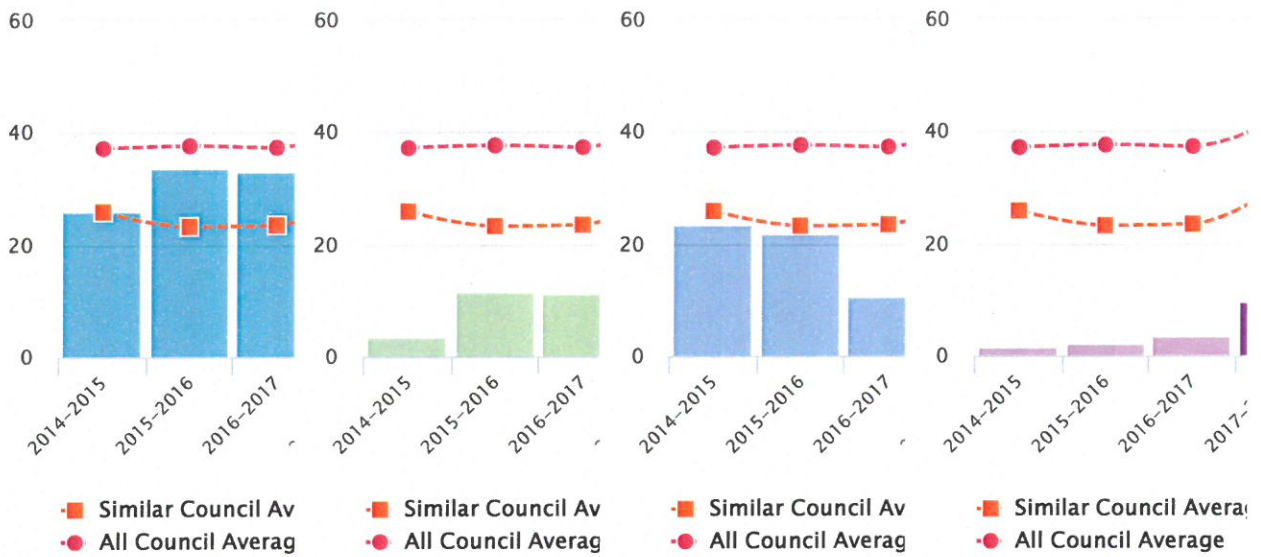
Direct cost to council of the kerbside recyclables collection service per kerbside recyclables collection bin

**BOROONDARA CITY**  
**\$46.99**

**KNOX CITY**  
**\$19.89**

**MANNINGHAM CITY**  
**\$12.11**

**WHITEHORSE CITY**  
**\$9.64**





## Kerbside collection waste diverted from landfill

Percentage of garbage, recyclables and green organics collected from kerbside bins that is diverted from landfill

**BOROONDARA CITY**

**48.70%**

**KNOX CITY**

**51.97%**

**MANNINGHAM CITY**

**54.12%**

**WHITEHORSE CITY**

**50.18%**

