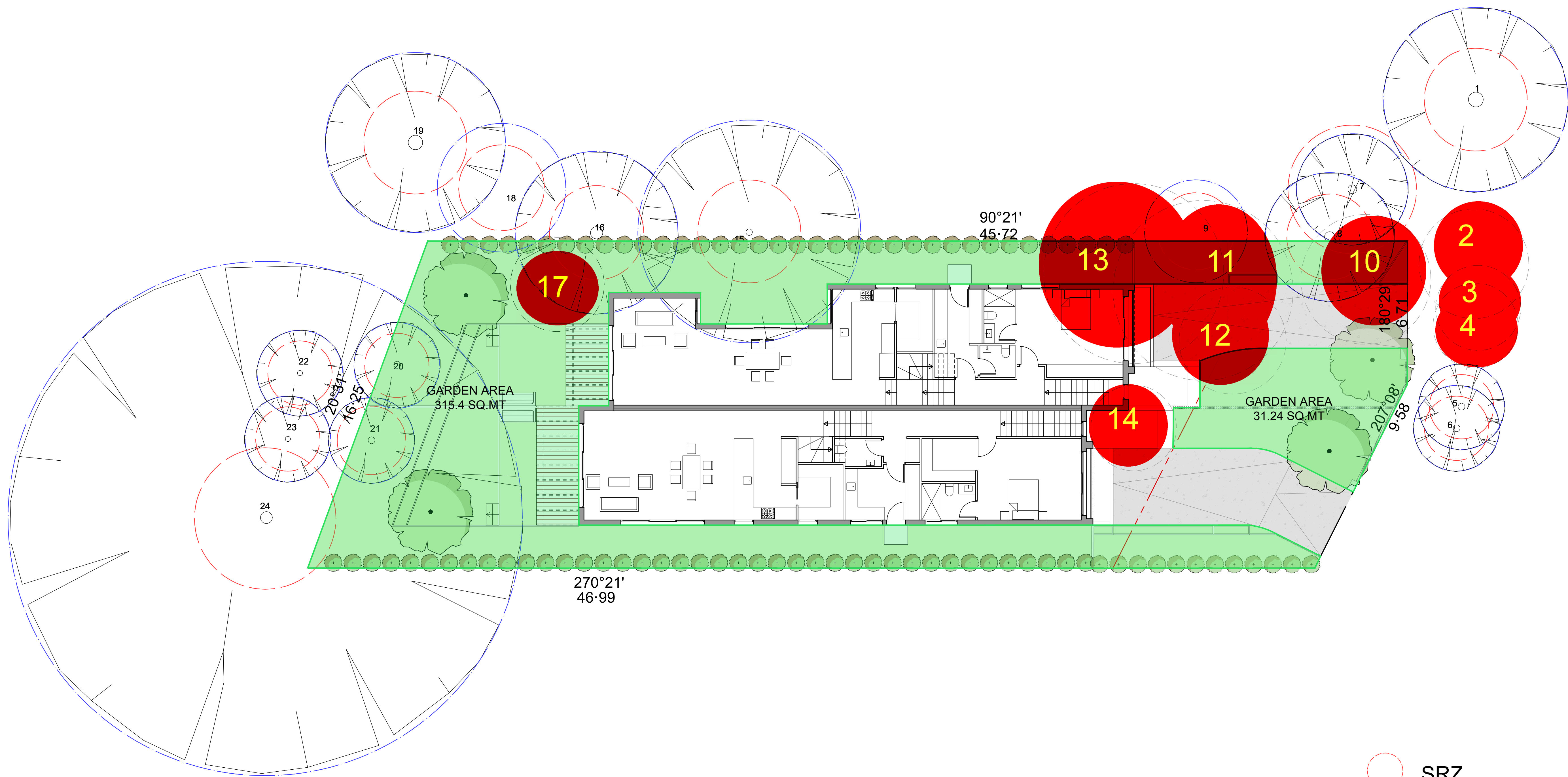


PLANNING AND ENVIRONMENT ACT 1987
WHITEHORSE PLANNING SCHEME
9/10/2018
ADVERTISED MATERIAL
CITY OF WHITEHORSE
This copied document is made available for the sole purpose of enabling its consideration and review as part of a planning permit under the Planning and Environment Act 1987. The document must not be used for any purpose which may breach copyright.

Tree Removal Plan



- SRZ
- TPZ
- REMOVED TREES
- GARDEN AREA

Revision Notes				
Rev	Date	By	Note	
P1	17/11/17	CF/BP	ISSUED FOR PLANNING SUBMISSION	
P2	01/03/18	CF	ISSUED FOR PLANNING SUBMISSION	
P3	18/04/18	SA	ISSUED FOR PLANNING SUBMISSION	
P4	21/08/18	SA	ISSUED FOR DISCUSSION	
P5	04/10/18	SA/BP	ISSUED FOR PLANNING SUBMISSION	

Project :
DUAL OCCUPANCY DEVELOPMENT AT 26
SALISBURY AVENUE, BLACKBURN

Title: GARDEN AREA		Drawing No: 1740- A1.03	Revision P5
Issue: PLANNING SUBMISSION	Date: AUG 2017	Scale @ A1/A3: 1:100/1:200	
	CAD File	Drawn By: SA/BP	