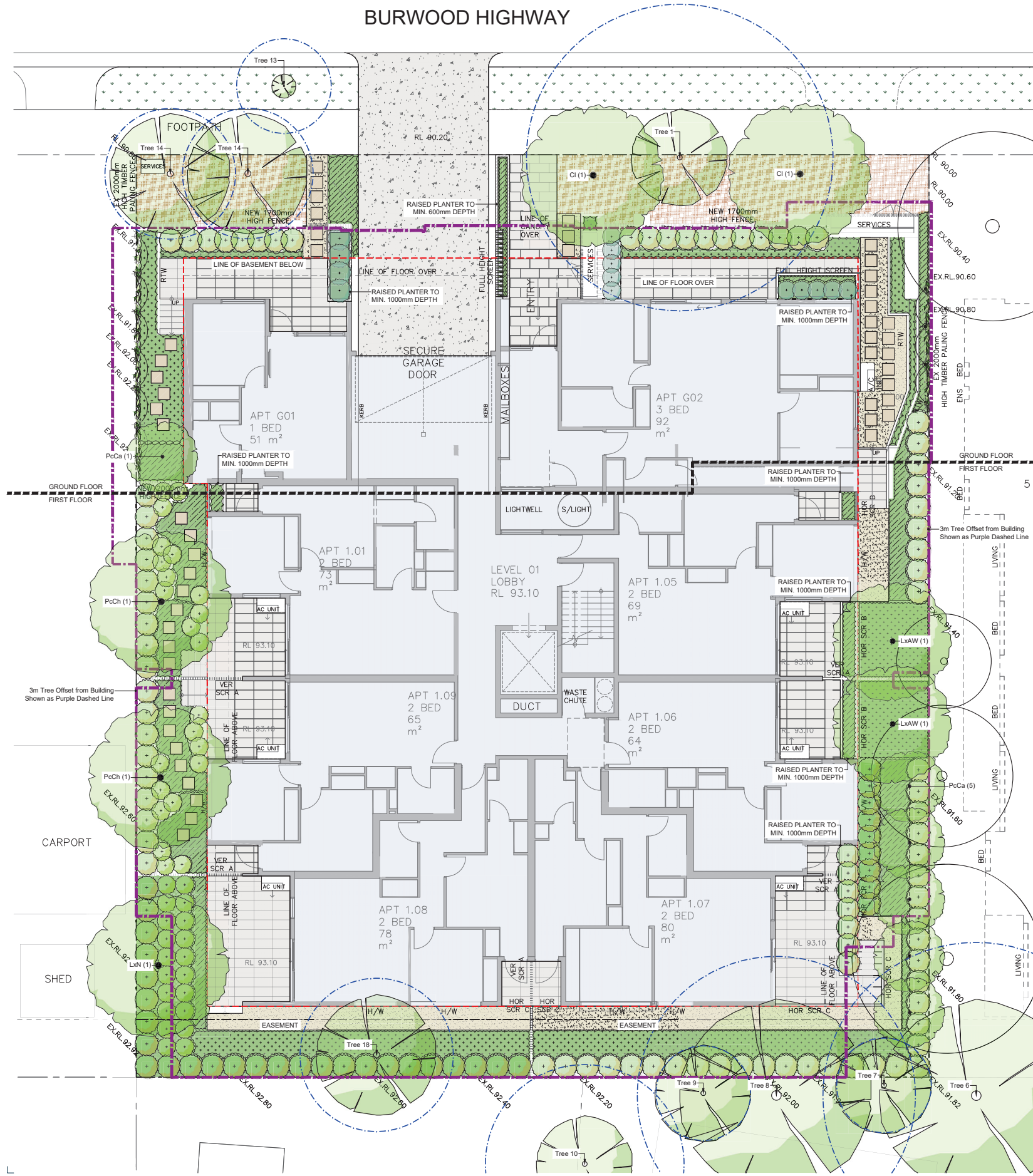
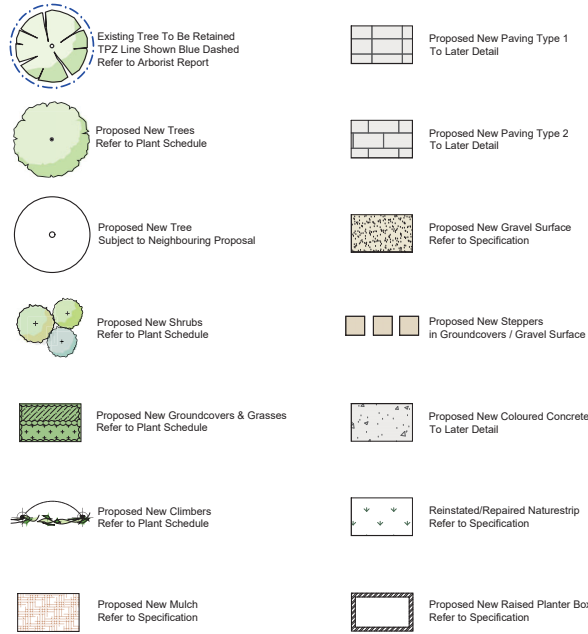


BURWOOD HIGHWAY



LEGEND



SPECIFICATION NOTES

Soil Preparation
Crushed rock, concrete spillage and any other material restrictive to plant growth (e.g. large rocks) shall be removed from the site of any planting beds and semi-advanced trees. All trees to be removed shall be stump ground and all rubbish/vegetative spoil is to be removed from site. Existing top soil in planting areas is to be preserved so that it does not receive additional compaction from site machinery and so that no rubble or building supplies are stored in these areas.

No imported top soil is to be used within the root zones of trees to be protected. Any preparation of existing soil for planting within these areas is to be done by hand only. Holes (e.g. as the result of plant removal) and uneven soil levels may be patched using topsoil as specified below.

Any imported topsoil is to be free of weeds, rubble and other materials damaging to plant growth and is to be of a medium texture (sandy loam) with a pH of 6.0-7.0. Top soil is to be laid over a prepared sub-base which has had any materials damaging to plant growth (e.g. rubble and large rocks) removed, spread to the appropriate depth and cultivated into the existing site soil to a minimum depth of 150mm.

Imported top soil is to be lightly and uniformly compacted in 150mm layers to a minimum depth of 100mm on lawn areas and 300mm on excavated planting beds.

Weed Removal
All weeds shall be thoroughly removed. All vegetative material, including roots and rhizomes of non-woody perennials and woody suckering weeds, is to be removed or appropriately controlled using chemical means. The stumps of non-suckering woody perennials are to be stump ground. All vegetative material shall be appropriately disposed of off site in a manner which will not allow their re-establishment elsewhere. Any chemical controls are to be used in accordance with manufacturer's instructions and standard occupational health and safety procedures.

Care must be taken to ensure that all trees to be retained are not damaged during weed removal. This also implies that any herbicides used are suitable for use around the vegetation to be retained.

Planting
Planting shall be carried out using accepted horticultural practices with all plants conforming to the species, size and quantities indicated on the Landscape Plan and Plant Schedule. Plants shall be thoroughly soaked through immersion in water prior to planting and the planting soil is very dry then the planting hole is also to be filled with water and allowed to drain completely.

All plants shall be appropriately hardened off in the nursery. Use plants with the following characteristics: Large healthy root systems with no evidence of root cut or pot bound restriction or damage, vigorous, well established, free from disease and pests and of good form, consistent with the species or variety.

Planting holes for shrubs and groundcovers are to be of minimum size 75mm larger than the plant pot in all directions. Semi-advanced tree planting holes are to be the same depth as the rootball and 2-3 times its diameter, with the top of the rootball being at grade. A 75mm high berm is to be constructed at edge of rootball to hold water. All plants are to be thoroughly watered after planting and slow release fertiliser added at the quantities specified by the manufacturer.

Mulch
Mulch is to be supplied to all garden beds and is to be an organic type laid to a minimum depth of 75mm, consisting of fine dark coloured chipped or shredded pine bark or hardwood with not more than 5% fines content by volume (preferably zero fines). The average size of the woodchip must be approximately 10mm x 20mm x 5mm and the maximum length is not to exceed 30mm. Mulch shall be free of damaging matter such as soil, weeds and sticks and is to be stockpiled and thoroughly weathered prior to delivery. Mulch is to be kept back 100mm from the stems of all plants to prevent collar rot.

Aggregate Gravel Surface
Aggregate gravel is to be installed where shown comprising of a 50mm layer of gravel (7-14mm granite screenings or similar, no fines) over a base course of 75mm deep gently compacted Fine Crushed Rock. The subgrade is to be appropriately compacted except for TPZ area.

Timber Edges
Provide 75 x 25mm treated pine edges to all borders between gravel mulch paths and garden beds using 75x25x300mm long treated pine stakes at 1200mm maximum centres. An additional stake is to be provided at joins in the plinth.

Irrigation
An approved drip irrigation system is to be supplied to all planter boxes & garden beds. It is the responsibility of the contractor to ensure that all irrigation meets manufacturers specifications. The system is to be connected to mains supply and include a rain-shut off device. All dripline is to be buried with approx. 50mm of topsoil cover and shall be anchored at regular intervals to ensure the tubing cannot be dislodged.

Raised Planter Boxes
Raised planter construction is to include, but not necessarily be limited to, the supply and installation of agricultural drains, drainage cells at base, filter fabric, planting medium, mulch and irrigation. Planter boxes must be effectively tanked and lined with corrugate to prevent leaking.

Drainage cells are to be provided at the base of the planter and are to be covered with a layer of filter fabric. A drainage outlet is to be installed in the base of the planter with the floor of the planter sloped towards it. Provide a root anchor if trees are to be planted in a windy location.

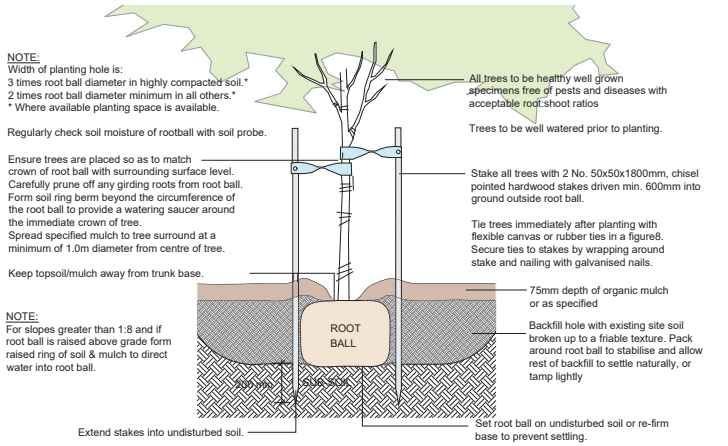
Supply and spread evenly a special lightweight planter mix, (to be advised) Compact, evenly in 100mm layers. Avoid differential subsidence and excess compaction and produce a finished surface that is graded evenly and ready for planting. Allow for 50mm layer of specified mulch to top of beds and a finished level 25-50mm below the planter rim. Drip irrigation as specified is to be installed beneath the mulch layer.

Repair/Restoration of damaged Nature-strips
Nature strips are to be restored to current grades with any depressions filled with topsoil to specifications above and lightly compacted in 150mm layers. Areas are then to be re-seeded using an appropriate and matching turf type and the area fenced off to allow the re-establishment of lawn. Re-seeded areas are to be well irrigated and the area supplied with a slow release fertiliser at the quantities recommended by the manufacturer.

Any areas of lawn which have failed to germinate (achieve an evenly green 95% covering of a consistent height) are to be re-seeded within one month of original sowing date.

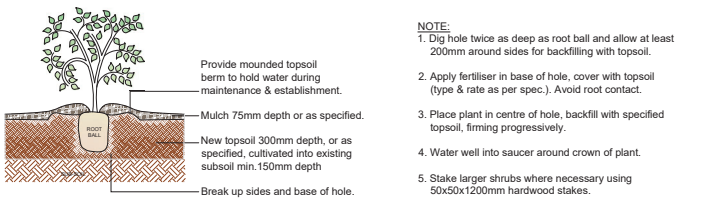
Plant Establishment Period
There shall be a 13 weeks Plant Establishment Period following the approval of Practical Completion by the responsible authority. During this period the landscape contractor shall make good all defects in his/her scope of works. Maintenance and Establishment means the care and maintenance of the contract area by accepted horticultural practices, as well as rectifying any defects that become apparent in the work under normal use. This shall include, but shall not be limited to watering, fertilising, weeding, pruning, pest and disease control, cultivation, re-staking and replacement of any plants that fail with plants of the same species and size.

TYPICAL PLANTING DETAILS



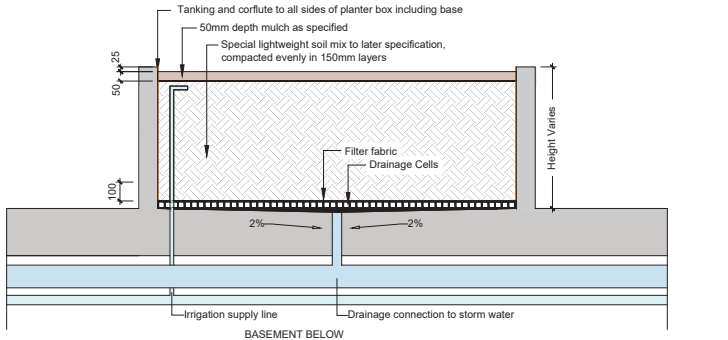
D1 TYPICAL TREE PLANTING DETAIL

Scale N.T.S.



D2 TYPICAL SHRUB PLANTING DETAIL

Scale N.T.S.



D3 TYPICAL LIGHTWEIGHT PLANTER BOX DETAIL

Scale 1:20

PLANT SCHEDULE

SYM	BOTANICAL NAME	COMMON NAME	D/E/N*	HEIGHT x WIDTH AT MATURITY	MIN SUPPLY SIZE	QTY
TREES						
CI	<i>Chamaecyparis lawsoniana</i>	Lawson's Cypress	EEx	12 x 8m	3mH	2
LxAW	<i>Lagerstroemia indica x L. fauriei</i> 'Albure White'	Albure White Crepe Myrtle	DEx	7 x 5m	3mH	2
LxN	<i>Lagerstroemia indica x L. fauriei</i> 'Natchez'	Natchez Crepe Myrtle	DEx	8 x 6m	3mH	1
PcCa	<i>Pyrus calleryana</i> 'Capital'	Capital Pear	DEx	11 x 3m	3mH	6
PcCh	<i>Pyrus calleryana</i> 'Chanticleer'	Chanticleer Callery Pear	DEx	11 x 6m	3mH	2
TOTAL						13
SHRUBS						
By	<i>Beschornia yuccoides</i>	Mexican Lily	EEx	1 x 1.5m	200mm pot	
Ca	<i>Correa alba</i>	White Correa	EN	1-1.5 x 1-1.5m	140mm pot	
HS	<i>Hebe 'King Sugar'</i>	King Sugar Hebe	EEx	1 x 1.5m	140mm pot	
Ms	<i>Murraya paniculata</i>	Orange Jessamine	EEx	2 x 1m (Clipped)	200mm pot	
RCW	<i>Rhaphiolepis indica</i> 'Cosmic White'	Cosmic White Indian Hawthorn	EEx	1.5-2 x 1.5m	140mm pot	
SBCh	<i>Syzygium australe</i> 'Bush Christmas'	Bush Christmas Lily-plily	EN	3 x 1m (Clipped)	200mm pot	
TOTAL						6
GROUNDCOVERS						
Ac	<i>Artropodium cirratum</i>	Renga Lily	EEx	0.7 x 0.7m	140mm pot	
DcB	<i>Dianella caerulea</i> 'Breeze'	Breeze Paroo Lily	EN	0.7 x 0.7m	140mm pot	
DcCB	<i>Dianella caerulea</i> 'Cassa Blue'	Cassa Blue Flax Lily	EN	0.5 x 0.4m	140mm pot	
DEA	<i>Dianella tasmanica</i> 'Emerald Arch'	Emerald Arch Flax Lily	EN	0.45 x 0.45m	140mm pot	
LmJR	<i>Liriope muscarifolia</i> 'Just Right'	Just Right Lily-turf	EEx	0.5 x 0.5m	140mm pot	
LIT	<i>Lomandra longifolia</i> 'Tanika'	Tanika Mat-rush	EN	0.50-0.6 x 0.65m	140mm pot	
Oj	<i>Ophiopogon japonicus</i>	Giant Mondo Grass	EEx	0.4 x 0.4m	140mm pot	
Pj	<i>Poa sieberiana</i>	Grey Tussock Grass	EN	0.5 x 0.5m	140mm pot	
Ta	<i>Trachelospermum asiaticum</i>	Yellow Star Jasmine	EEx	0.2 x Spreading	140mm pot	
TOTAL						9
CLIMBERS						
Pj	<i>Parthenocissus quinquefolia</i>	Virginia Creeper	DEx	Self-clinging Climber	140mm pot	
Tj	<i>Trachelospermum jasminoides</i>	Star Jasmine	EEx	Climber	140mm pot	
TOTAL						2

*D/E = Deciduous/Evergreen N/E = Native/Exotic

└







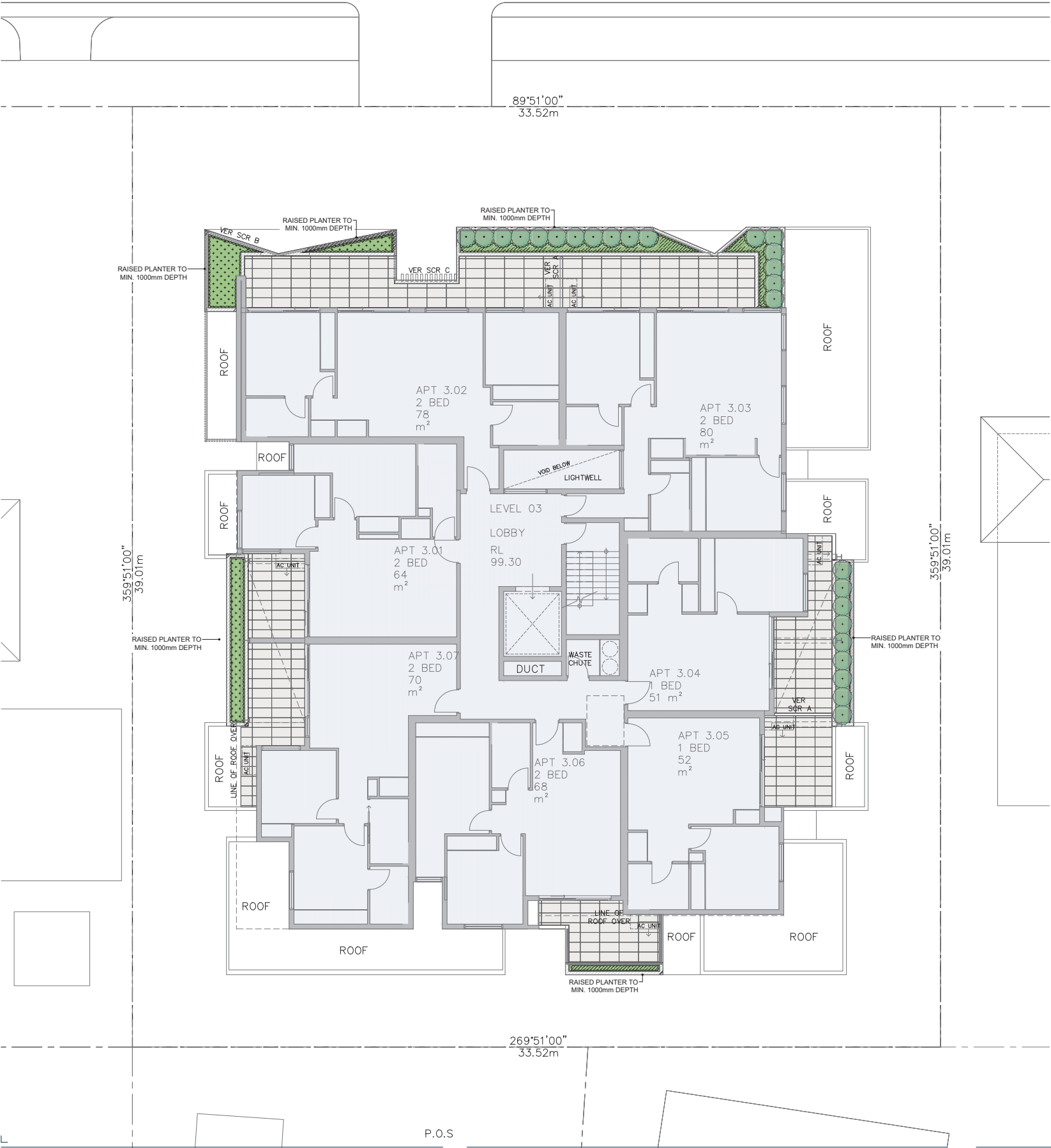
Scale 1:20

CAD FILE 18-0807 L-7

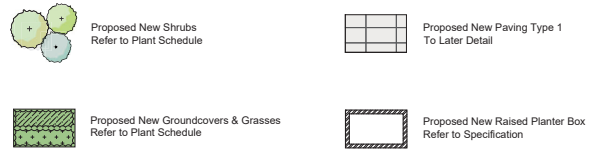
408-410 Burwood Highway,
Vermont South



BURWOOD HIGHWAY



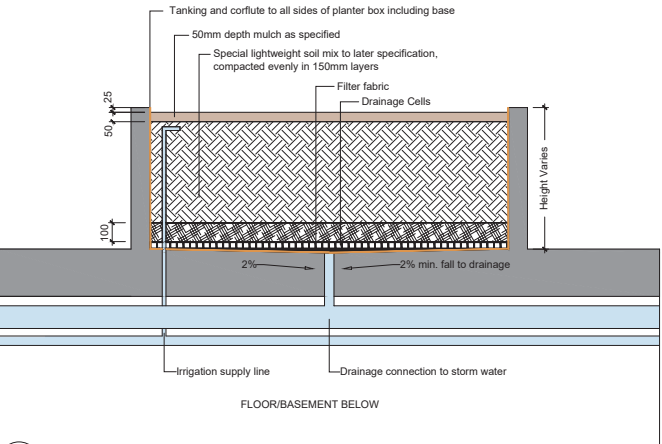
LEGEND



PLANT SCHEDULE

SYM	BOTANICAL NAME	COMMON NAME	DIE NEX*	HEIGHT X WIDTH AT MATURITY	MIN SUPPLY SIZE	QTY
SHRUBS						
HIS	<i>Hebe 'Icing Sugar'</i>	Icing Sugar Hebe	E/Ex	1 x 1.5m	140mm pot	
RCW	<i>Rhaphiolepis indica 'Cosmic White'</i>	Cosmic White Indian Hawthorn	E/Ex	1.5-2 x 1.5m	140mm pot	
SaTT	<i>Syzygium australe 'Tiny Trev'</i>	Tiny Trev Lilly-pilly	EN	1 x 1m	140mm pot	
TOTAL						
GROUNDCOVERS & GRASSES						
Cs	<i>Convolvulus sabatius</i>	Moroccan Bellflower	E/Ex	0.3 x 1.5m	140mm pot	
D/LR	<i>Dianella revoluta 'Little Rev'</i>	Little Rev Flax Lily	EN	0.3-0.4 x 0.3m	140mm pot	
Lc/S	<i>Lomandra confertifolia</i> spp. <i>rubiginosa</i>	Seascape Mat-rush	EN	0.5 x 0.75m	140mm pot	
Oj	<i>Ophiopogon japonicus</i>	Giant Mondo Grass	E/Ex	0.4 x 0.4m	140mm pot	
Ta	<i>Trachelospermum asiaticum</i>	Yellow Star Jasmine	E/Ex	0.2 x Spreading	140mm pot	
TOTAL						

*D/E = Deciduous/Evergreen N/Ex = Native/Exotic



D3 TYPICAL LIGHTWEIGHT PLANTER BOX DETAIL
Scale 1:20

JOHN PATRICK

LANDSCAPE ARCHITECTS PTY LTD
324 Victoria Street,
Richmond, VIC 3121
T +61 3 9429 4855
F +61 3 9429 8211
admin@johnpatrick.com.au
www.johnpatrick.com.au

REVISION

A To Council Request

DATE

08-03-2019

BY

BB

COPYRIGHT

This drawing must not be copied in whole or in part without the consent of John Patrick Landscape Architects Pty Ltd
Do not scale off drawings

NOT FOR CONSTRUCTION

CLIENT

Shadow Capital Pty Ltd

DRAWING

Landscape Plan - Level 3
for Town Planning

SCALE

1:100 @ A1

DATE

NOV 2018

DRAWN

MS

CHECKED

BB

JOB NO

18-0807

DWG NO

L-TP03 - Rev A

CAD FILE

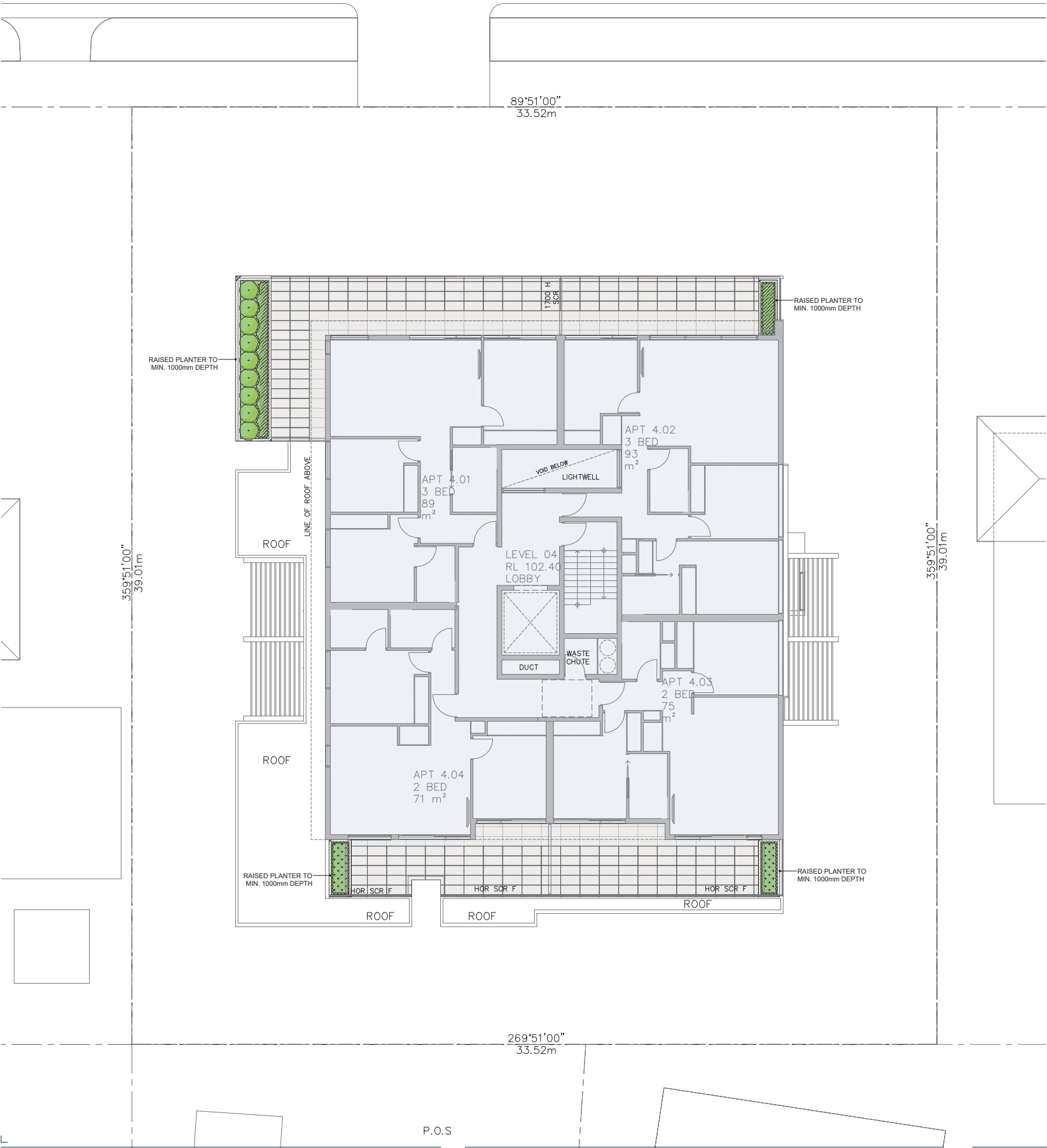
18-0807 L-TP01 - Rev A

PROJECT

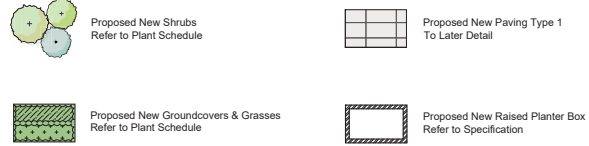
Proposed Development

408-410 Burwood Highway,
Vermont South

BURWOOD HIGHWAY

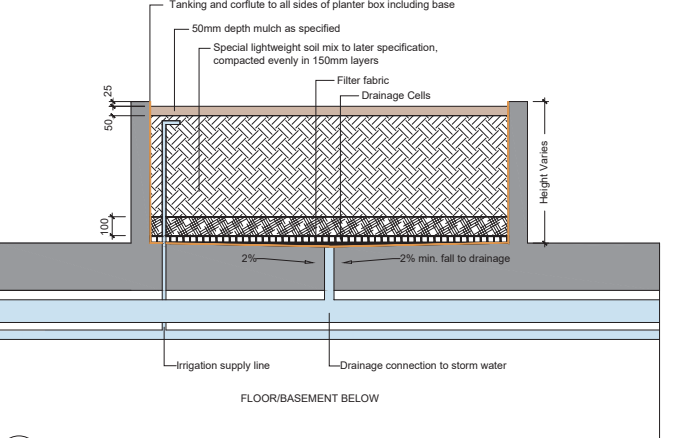


LEGEND



PLANT SCHEDULE

SYM	BOTANICAL NAME	COMMON NAME	D/E/N [*]	HEIGHT X WIDTH AT MATURITY	MIN SUPPLY SIZE	QTY	TO LATER DETAIL
SHRUBS							
HIS	<i>Hebe 'Icing Sugar'</i>	Icing Sugar Hebe	E/Ex	1 x 1.5m	140mm pot		
RCW	<i>Raphiolepis indica 'Cosmic White'</i>	Cosmic White Indian Hawthorn	E/Ex	1.5-2 x 1.5m	140mm pot		
SaTT	<i>Syzygium australe 'Tiny Trev'</i>	Tiny Trev Lilly-pilly	EN	1 x 1m	140mm pot		
TOTAL							
GROUNDCOVERS & GRASSES							
Cs	<i>Convolvulus sabatius</i>	Moroccan Bellflower	E/Ex	0.3 x 1.5m	140mm pot		
D/LR	<i>Dianella revoluta 'Little Rev'</i>	Little Rev Flax Lily	EN	0.3-0.4 x 0.3m	140mm pot		
Lc/S	<i>Lomandra confertifolia</i> ssp. <i>rubiginosa</i>	Seascape Mat-rush	EN	0.5 x 0.75m	140mm pot		
Oj	<i>Ophiopogon jaburan</i>	Giant Mondo Grass	E/Ex	0.4 x 0.4m	140mm pot		
Ta	<i>Trachelospermum asiaticum</i>	Yellow Star Jasmine	E/Ex	0.2 x Spreading	140mm pot		
TOTAL							
*D/E = Deciduous/Evergreen N/Ex = Native/Exotic							



D3 TYPICAL LIGHTWEIGHT PLANTER BOX DETAIL
Scale 1:20

JOHN PATRICK

JOHN PATRICK
LANDSCAPE ARCHITECTS PTY LTD
324 Victoria Street,
Richmond, VIC 3121
T +61 3 9429 4855
F +61 3 9429 8211
admin@johnpatrick.com.au
www.johnpatrick.com.au

REVISION
A To Council Request

DATE
08-03-2019

BY
BB

COPYRIGHT
This drawing must not be copied in whole or in part
without the consent of John Patrick Landscape
Architects Pty Ltd
Do not scale off drawings

NOT FOR CONSTRUCTION

CLIENT
Shadow Capital Pty Ltd

PROJECT
Proposed Development

408-410 Burwood Highway,
Vermont South

DRAWING
Landscape Plan - Level 4
for Town Planning

SCALE
1:100 @ A1

DATE
NOV 2018

DRAWN
MS

CHECKED
BB

JOB NO
18-0807

DWG NO
L-TP04 - Rev A

CAD FILE
18-0807 L-TP01 - Rev A