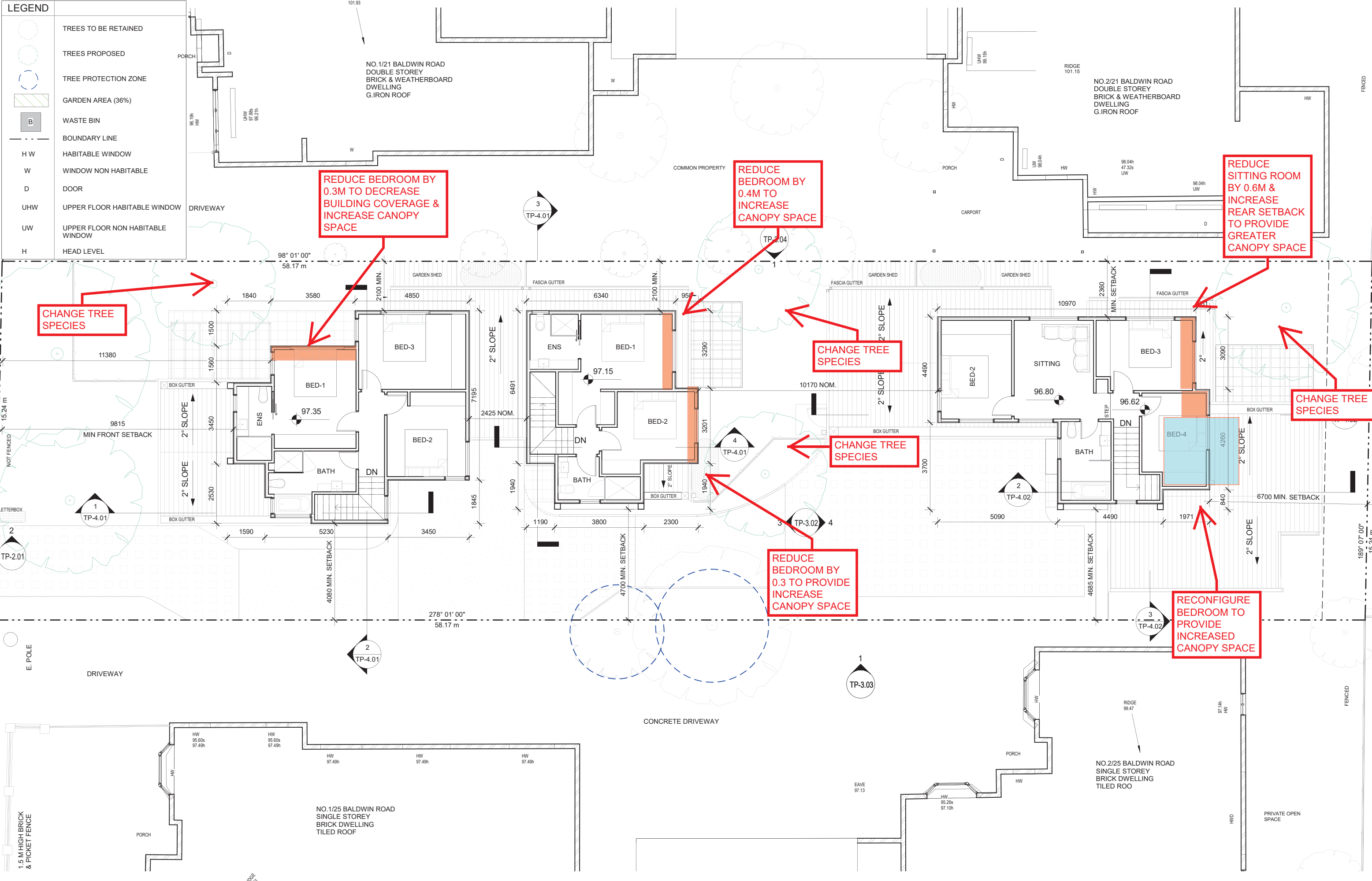


LEGEND

- TREES TO BE RETAINED
- TREES PROPOSED
- TREE PROTECTION ZONE
- GARDEN AREA (36%)
- WASTE BIN
- BOUNDARY LINE
- H W HABITABLE WINDOW
- W WINDOW NON HABITABLE
- D DOOR
- UHW UPPER FLOOR HABITABLE WINDOW
- UW UPPER FLOOR NON HABITABLE WINDOW
- H HEAD LEVEL



PROJECT:
FIRST FLOOR PLAN
Residential Development
23 Baldwin Rd Blackburn

REVISION SCHEDULE		
Number	Description	Date
0	Town Planning Application	23/10/2019
A	Town Planning RFI Response - 3 Units	22/04/2020

Figured dimensions take precedence over scaled dimensions. All dimensions to be checked on site prior to construction or shop fabrication.
DRAWINGS ARE NOT FOR CONSTRUCTION UNLESS NOTED OTHERWISE
Copyright DE atelier Architects



ISSUED FOR: TOWN PLANNING



DE atelier Pty Ltd
Suite 4, 65 Madeley St
Ocean Grove, VIC 3226
T: +613 5255 3378
F: +613 5255 3391
ABN 93 363 900 373